

Hello.

We design brands, wayfinding & signage programmes, and product experiences.

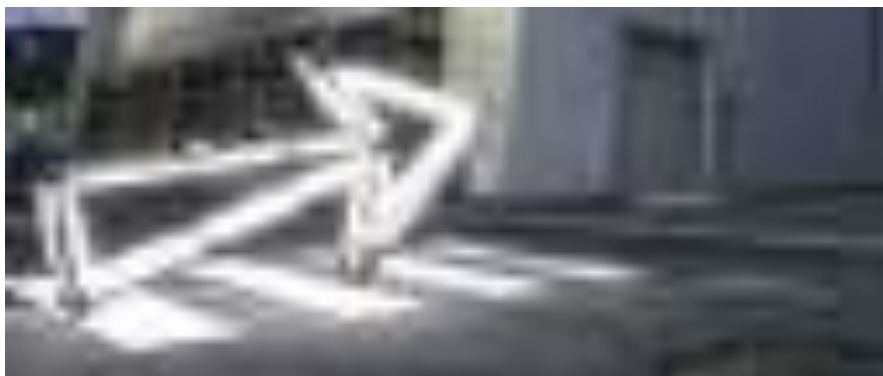
PenguinCube

Capabilities



Brand Design

Distinctive brand experiences.



Wayfinding & Signage Design

Navigation experiences that connect people to place.



Product Design

Intuitive product research & development.



Spatial Design

Immersive and captivating spaces.



User Interface Design

Fluid user experiences.

An International Experience

[illegible]

Transportation & Mobility

PenguinCube

Clientele

PERKINS+WILL



RMJM



ART DUBAI
الزبداء

نون
noon



TECOM GROUP

ماجد الفطيم
MAJID AL FUTTAIM

solidere



DUBAI
DESIGN
DISTRICT

Qatar
Foundation



شروق
SHUROOQ

مركز الملك عبد الله المالي
KAFD

Kempinski



COWI

OMA

SHARJAH ART FOUNDATION



دبي
للثقافة Culture

دبي
للسياحة Tourism

Systematica

BRITISH
COUNCIL

dar al-handasah
shair and partners

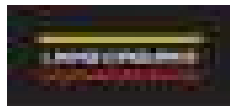


ALSERKAL AVENUE

Silatech



1866
AUB



صيدلية الدواء
al-dawaa pharmacy

h+k

IKANO

المملكة
KINGDOM

DLR Group®

CHATHAM HOUSE

بنك الخليج الدولي
FGB

JLL®

Capitalbank
كابيتال بنك

NSHAMA®



bintal

خطيب وعلمي
Khatib & Alami

سينما عقيل
CINEMA AKIL

INTERCONTINENTAL
HOTELS & RESORTS

FOUR SEASONS

bankmed

CONSOLIDATED
CONSULTANTS
GROUP



Award-Winning Projects



Alserkal Arrows, Dubai
Society for Experiential Graphic Design Honor Award
Seattle, 2016



Ashkal Alwan Bookshelf, Beirut
Society for Experiential Graphic Design Honor Award
New York, 2012



PenguinCube, Beirut
British Council Young Creative Entrepreneur Award
London, 2012



Forgotten Cities Trail, Syria
Society for Experiential Graphic Design Honor Award
Montreal, 2011



PiFive, Worldwide
iF International Forum Communication Design Award
Hannover, 2010



reddot design award
winner 2008

PiFour, Worldwide
Red Dot Design Museum Product Design Award
Essen, 2008

Research

Process Makes Perfect. Committed to Investing in Research.

More than 10% of our collective resource time is dedicated to research initiatives.

Initiatives ranging from typeface preservation to understanding the future of consumer goods; studying trends in user interface design and packaging, our research work impacts our approach and outlook.



What is a product?

Our product design experiments help us better understand user behaviour and actions.



The Question of Type.

Our typeface experiments and archival projects inform our understanding of Arabic type and culture.



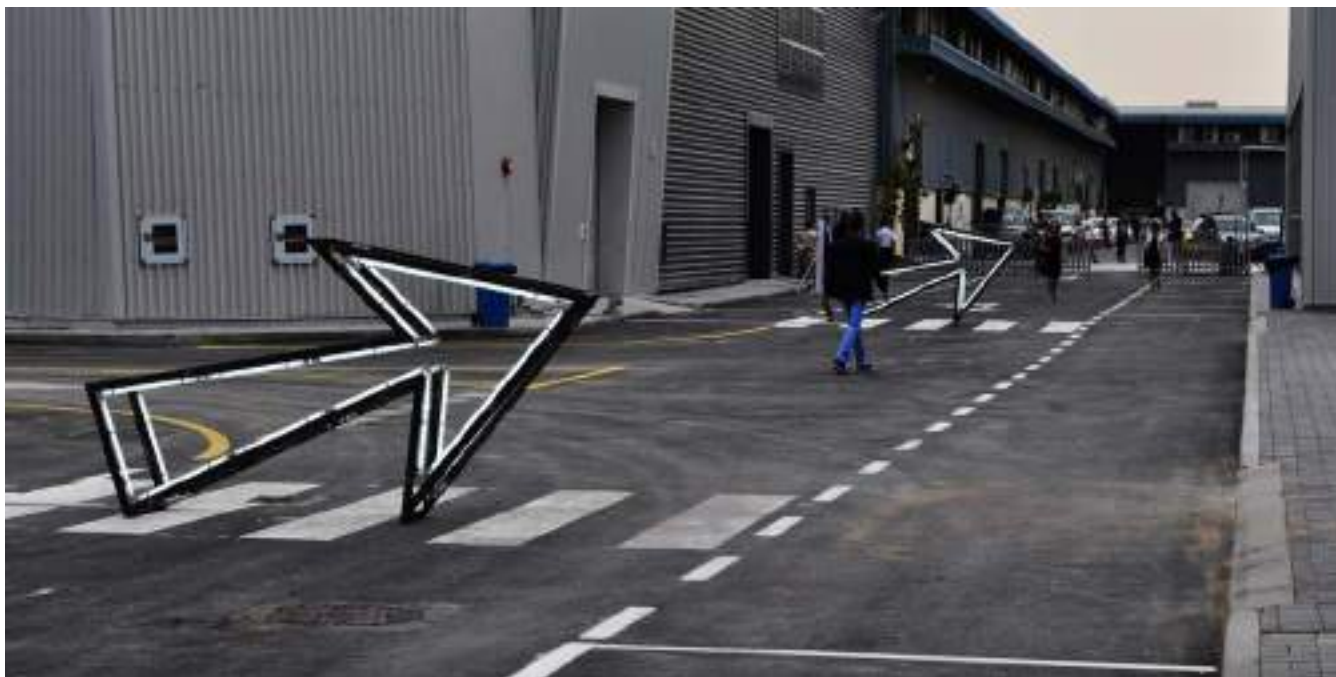
Talk With the Community.

Our countless engagements with students and professionals bring to light a vast array of challenges in the design industry.



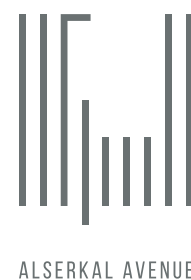
The Future of Consumer Goods.

Our key focus area over the last 2 years is to understand how consumer goods can adapt to the shift from traditional retailing to e-commerce.

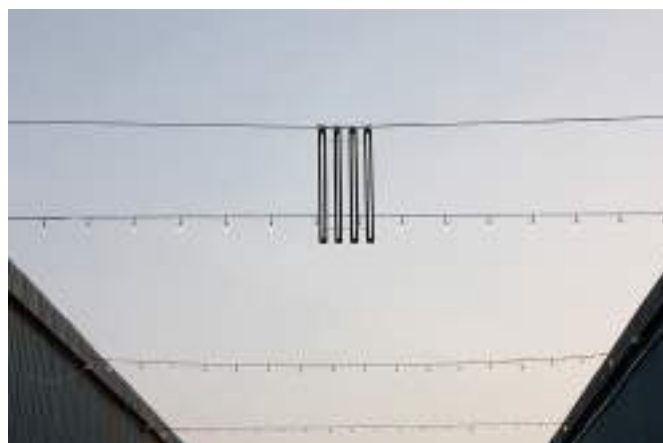


The heart and catalyst of the regeneration of Al Quoz district in Dubai is Alserkal Avenue, a private compound of warehouses previously part of a marble storage and processing facility. Alserkal Avenue, now home to the city's trendiest cultural spots, with a multitude of creative spaces, contemporary galleries, museums and artist residences, inaugurated its expansion in 2015, doubling its previous size.

PenguinCube was involved in creating a seamless wayfinding system for the masterplan. The overall signage concept is inspired from the brand, using thin vertical lines and visual elements and keeping the strong industrial urban theme.



ALSERKAL AVENUE



PenguinCube Sport Society

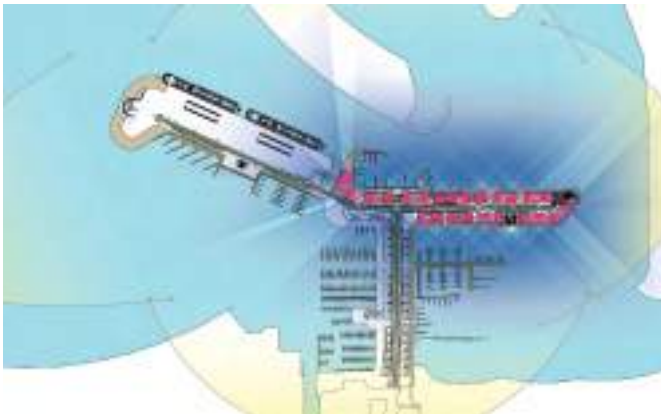


A new home for sport enthusiasts. This unique project is The World's Premiere Sport Destination. Working closely with the Architect, our team developed a fully integrated wayfinding and signage system, that helps users get to move, refuel, shop and cheer.



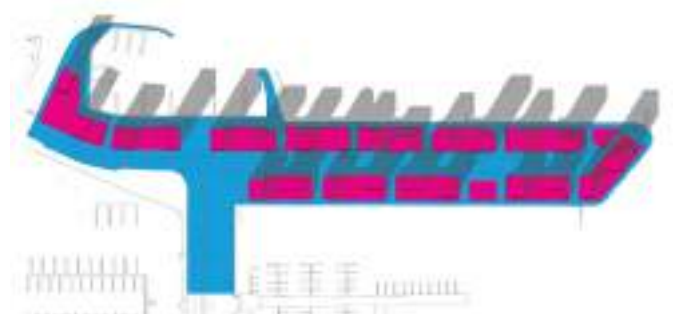
Wayfinding and signage. Commissioned by **DLR Group**. Executed in **Dubai**. Completed in **2017**.

Emaar Beachfront



Emaar Beachfront is a master development of residential towers with breathtaking views to JBR, The Palm Jumeirah, and Dubai Marina.

PenguinCube was tasked with developing the masterplan wayfinding and signage design guidelines that will be applied by each of the towers wayfinding and signage designers to ensure consistency and a baseline quality standard.

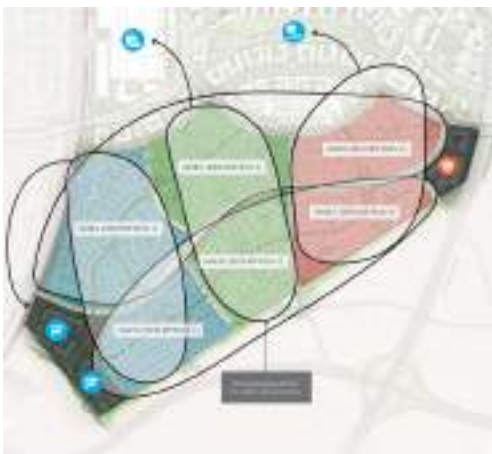


Emaar Hills Estate



DUBAI HILLS ESTATE is an EMAAR development of luscious landscaped greens and pristine fairways with an iconic backdrop of the Burj Khalifa and the Dubai skyline.

Our team was mandated with developing a unified naming strategy for the development. Our solution was to design a toolkit with a step-by-step process for defining, positioning, and selecting names of buildings, residential communities, parks, amenities, streets, and neighbourhoods.





Al-Balad, the UNESCO designated historic centre of the city of Jeddah, can literally be translated as “The Town.” Founded in the 7th century and historically served as the centre of the city. The urban regeneration project consists of restoring historic buildings, upgrading works for the public realm, and other social activations.

PenguinCube has been tasked with developing a comprehensive wayfinding strategy and signage design at a masterplan level that will serve the area for at least the next 50 years.

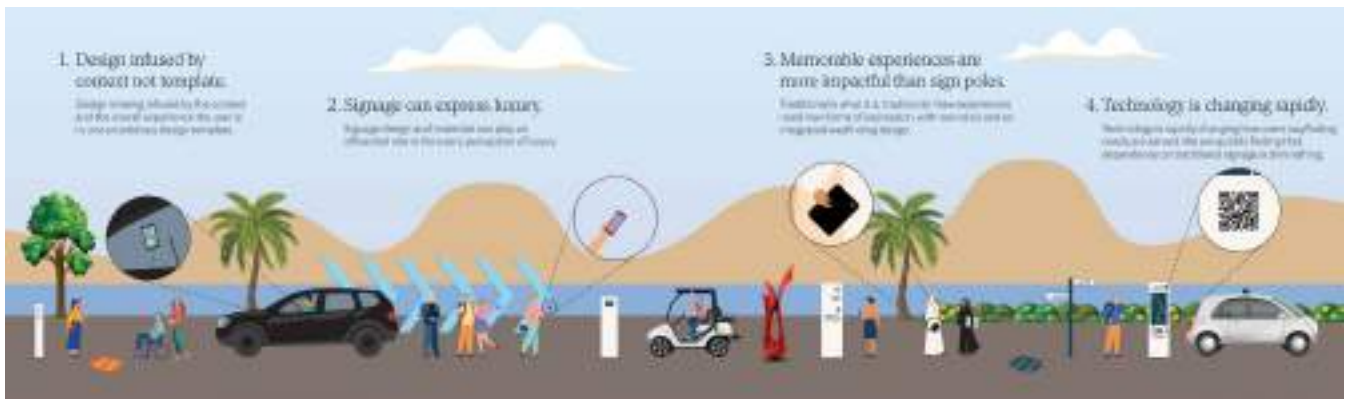
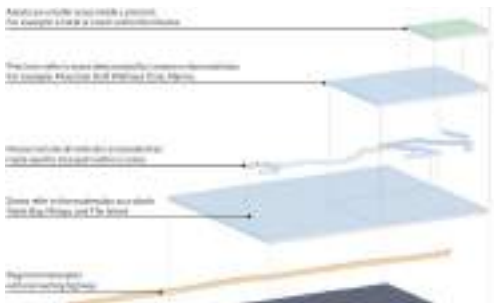


AMAALA Resort

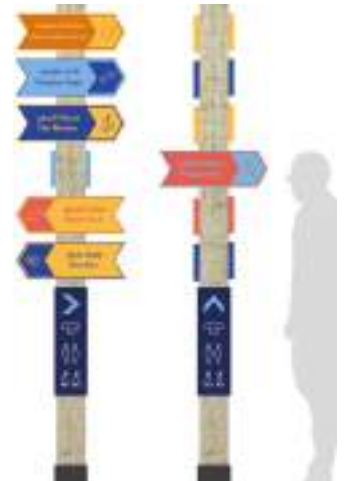


We create transformative personal journeys inspired by the arts, wellness, and the purity of the Red Sea. That is the defining statement of Amaala, a purpose-built resort town for the ultra-wealthy.

Our role was to define the masterplan signage and design strategy and design principles to allow the multiple teams and projects on the site to develop their signage with consistency and a baseline standard.



PenguinCube Marsana



Marsana is the newest beachfront destination in Abu Dhabi. A mix of restaurants, boardwalks, and sports facilities, this is a must go-to-destination.

PenguinCube was tasked with developing the wayfinding and signage design strategy from concept through to detail design.

The final design makes use of natural timber contrasted with fun, bright colours that will certainly put you in a happy mood.



Jubail Island



Nestled between Yas Island and Saadiyat Island in Abu Dhabi lies Jubail Island. Unique in its approach to community living, the Island is a low-impact, low-density settlement with distinct villages seamlessly woven across natural landscapes and marine waterways to create a natural, invigorating, serene living environment.

The wayfinding design approach reflects the core values of the development: nature preservation and sustainability. This meant sensitivity in the use of materials and considerations for sign placement to avoid visual pollution. Challenging the norms of traditional “standardized” signage design, and our emphasis on contextual design across the Jubail Island, inspired the development of a kit of parts that adapts from one asset to another across the Island while retaining a common visual language.



Liwa Lodges



Liwa Lodges is a premium desert resort destination. A true “Glamping” development with the amenities of a luxury hotel.

Our team was mandated to develop the wayfinding and signage design for the project. Our solution was a serene and simple approach that makes use of natural materials such as copper and stone to integrate and blend with the natural environment.

PenguinCube

SAF The Flying Saucer



The Flying Saucer was inaugurated in 1978, as a one-stop-shop in Sharjah with a café and restaurant, newsstand, gift shop and drugstore. Though short-lived, the building later became a grocery store then fast food restaurant. It is an architectural landmark; the futuristic circular structure is capped with a dome and has a fully glazed façade with V-shaped leaning pillars, offering a panoramic interior. The building conjures many memories for generations who grew up in Sharjah.

As the space has recently transformed into a contemporary art space with a coworking space and café, PenguinCube was mandated with the design of the signage and wayfinding.



Wayfinding and Signage Design. commissioned by Sharjah Art Foundation. executed in Sharjah. Completed in 2020.

PenguinCube

Souq Al Mina



Souq Al Mina embodies Abu Dhabi culture in every sense. An unforgettable journey of tastes, scents and ambiance. The destination reworks tradition and heritage into a modern, unique souq experience for locals and tourists alike. A 'souq hub' to relive times gone by.

PenguinCube designed the wayfinding and signage as part of the overall upgrade of the Souq.



Wayfinding and Signage Design. Commissioned by Aperture Design Studio/Aldar. Executed in Abu Dhabi. Completed in 2021.

Meet d3 - Dubai Design District



The Dubai Design District (d3) is one of the newest Free Zone developments in Dubai. Dedicated and on a mission to make Dubai a regional and international hub for Design. The Management team of the District wanted “to put d3 on the map” and decided to do so by a 3 day mega design festival.

PenguinCube collaborated with Wanders Wagners Architects to design the overall event experience. This task entailed the entire user experience from arriving to the venue by car or public transport, to entering the venue, to discovering all of the exhibitors, F&B and entertainment, and to finally leaving again.



PenguinCube

Nature Sites



As part of the Ghadan 21 vision projects in Abu Dhabi, PenguinCube was tasked to develop the wayfinding and signage design for 5 pilot projects out of the potentially 50 True Nature Sites in the Emirate.

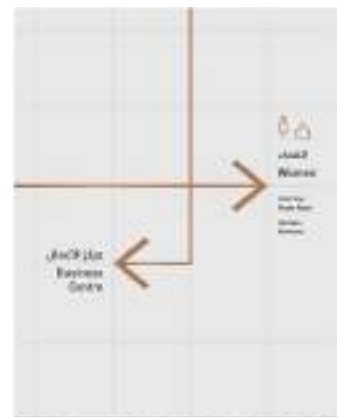
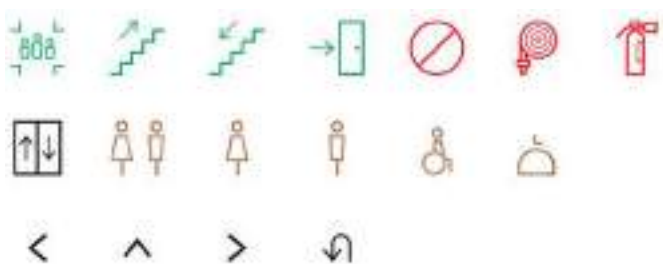
The design used Corten Weathering Steel panels that will rust with time and create an authentic natural finish with the environment. Wayfinding and narrative signs were designed.



Wayfinding and signage. Commissioned by **GHD**. Executed in **Abu Dhabi**. Completed in **2020**.

PenguinCube

Crowne Plaza



One of the most popular and iconic mixed-use complexes in Dubai. PenguinCube was part of the team developing an in-depth renovation design. The new wayfinding and signage design created an experience for users that was modern, simple and straightforward.



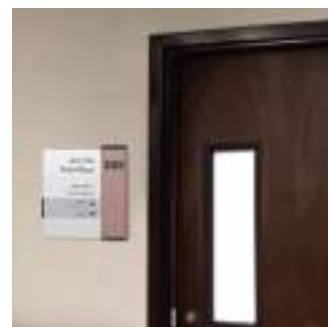
Wayfinding and signage. Commissioned by **Pearl Azure**. Executed in **Dubai**. Completed in **2018**.

PenguinCube Healthpoint



A premium boutique hospital in Abu Dhabi with a focus on high-quality hospitality and service. Healthpoint Hospital recognises that good wayfinding and signage design is a crucial component for improving customer service.

Our team was mandated with the upgrade and redesign of the wayfinding system across the entire hospital. The final result was friendly, welcoming and easy to read signs which allowed for quick content changes whenever required.



Old Airport Terminal Muscat



Envisioned as a restoration, rather than renovation, The Old Muscat International Airport Passenger Terminal is transforming into a state-of-the-art district of culture and innovation.

At the heart of the concept, “Looking back to look forward” is our method to achieve the synergy between the Terminal’s previous function with its future. The project aims to preserve history, heritage, and memory while presenting a canvas for its users to progress.

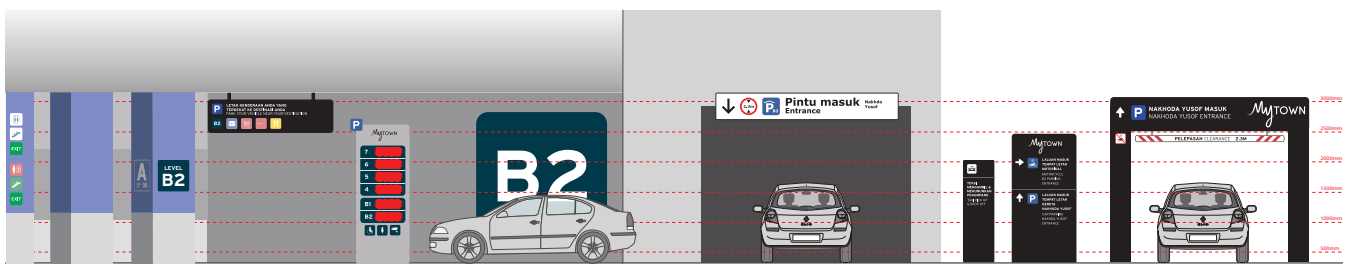
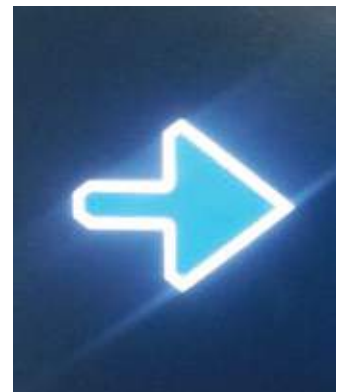
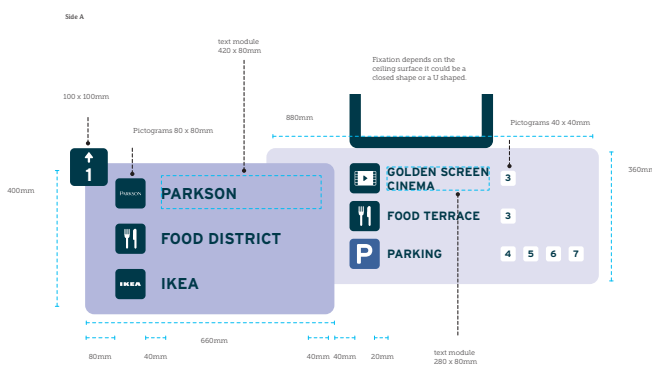
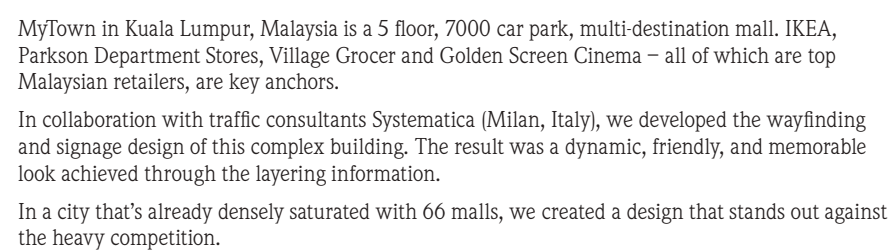
The means to do so is two-fold: firstly, by creating a raw space and noble, filled with natural sunlight. Secondly, nostalgic about what the airport represented by preserving the layers of history and critical recognisable elements of the Terminal to maintain and uphold the historical, emotional, and nostalgic memory.

The Terminal will now function as a district, with its 51,378 sqm area enticing cultural development and innovation via spaces for an aviation museum, ateliers, events, education, business, FandB and retail.

PenguinCube’s role was to develop the vision for the project.



MyTown Mall



Wayfinding and signage. Commissioned by **IKANO**. Executed in **Kuala Lumpur**. Inaugurated in **October 2016**.

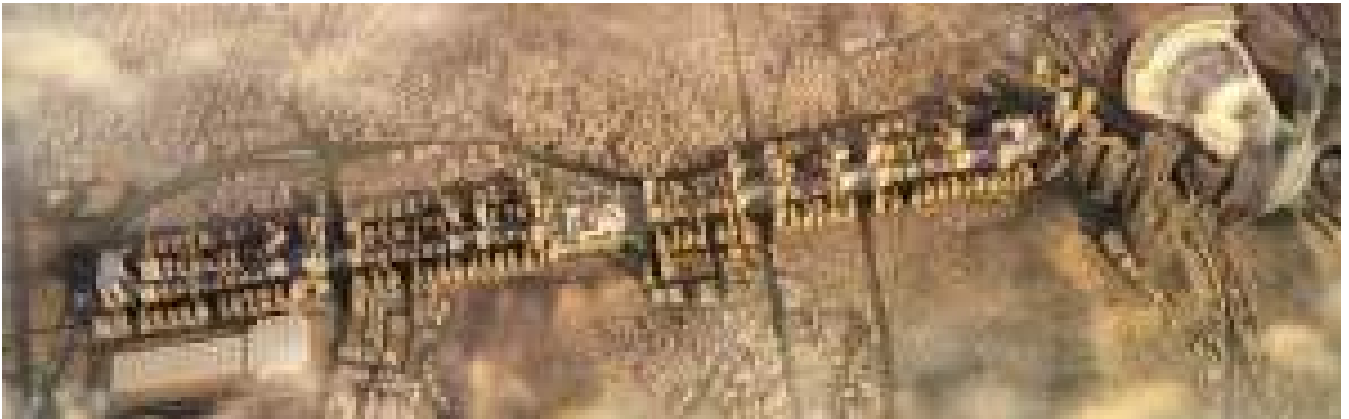
Lycée Libanais Francophone Dubai



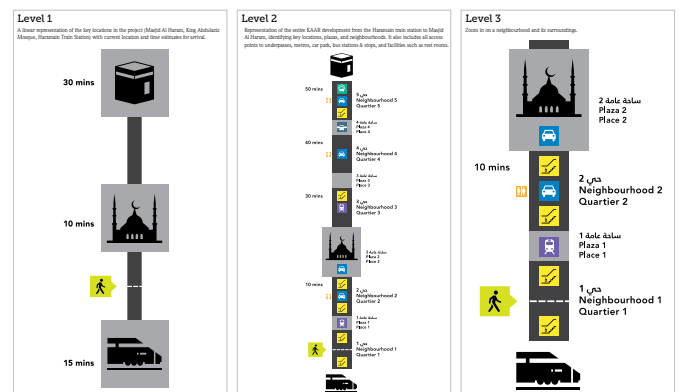
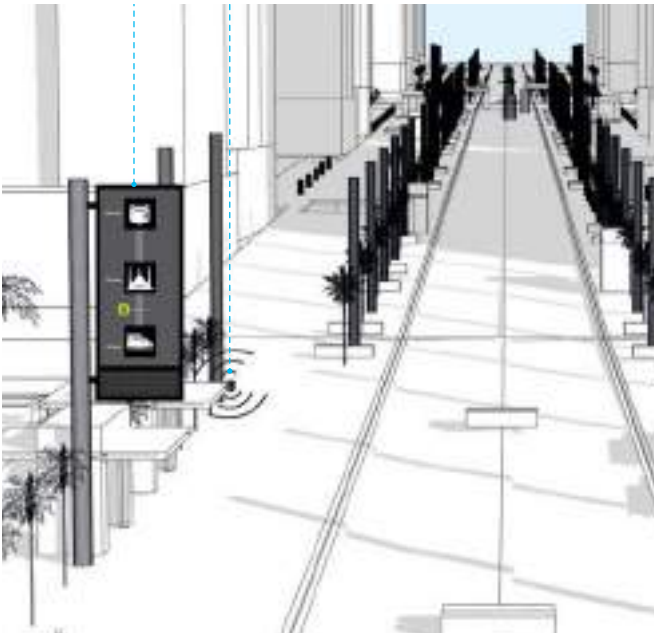
The Lycée Libanais Francophone Private School Dubai is in the process of developing a new campus in Meydan, Dubai. Recognising that spatial graphics and wayfinding are essential factors in advancing a great school, PenguinCube was tasked with developing the wayfinding and signage design.

The design is based on different moods for each of the schools' departments, expressed through pastel-like colours and shapes.

King Abdulaziz Road Makkah



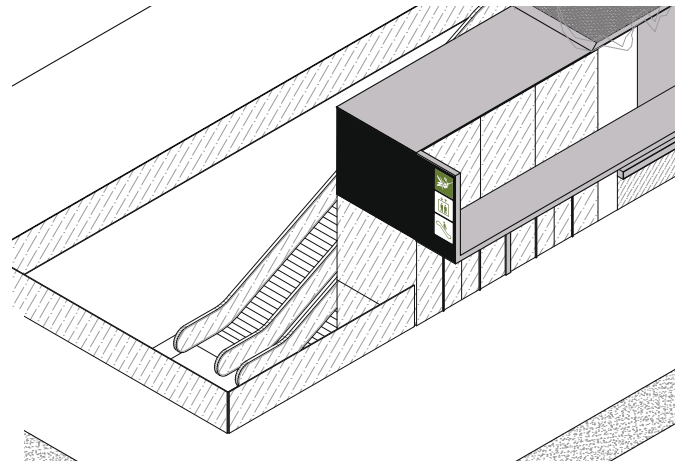
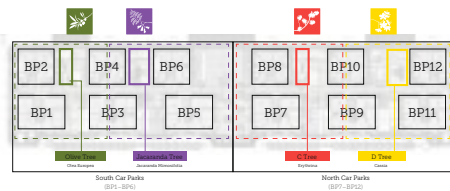
A large scale wayfinding and media master plan strategy of an iconic development in the heart of Islam's holiest city, Makkah. A 300+ page submission document encompasses an integrated set of guidelines and recommendations that aim to enhance the overall experience of visitors to the KAAR development and assist in providing excellent and cohesive wayfinding and media that compliments the project master plan.



Majid Al Futtaim Business Park

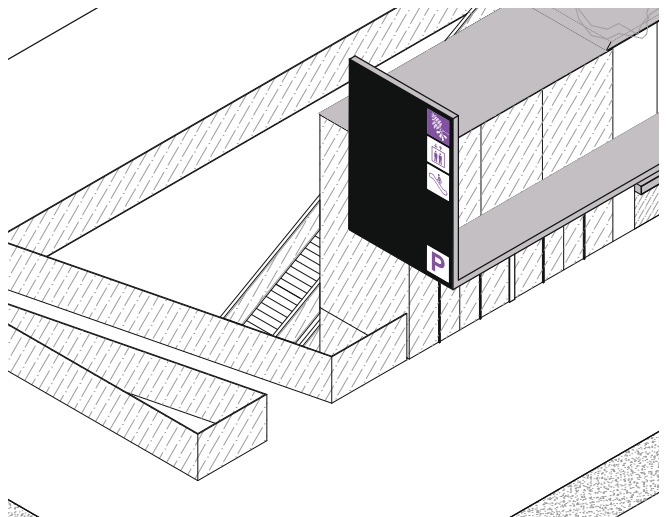
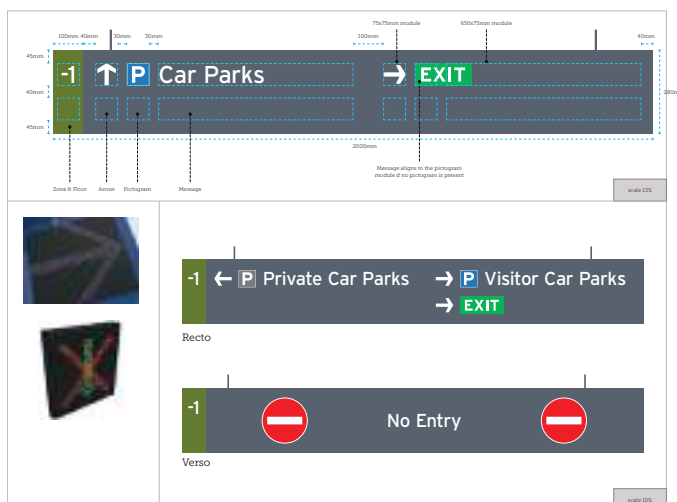


The first purpose-built business park in Lebanon, PenguinCube developed an integrated wayfinding and signage strategy and design for the development.



Futuristic screen, not a static directory
Different things on display
Dynamic, interchangeable

LED modules
Beige, mounted, brushed with gold
Maximum of four per pitch (high resolution)



University of Sharjah



The University of Sharjah's massive campus was built 20 years ago with little consideration for wayfinding and orientation. With most buildings having similar façade designs, it is difficult for users to differentiate one building from another.

With multiple design challenges at hand, PenguinCube developed a wayfinding and signage design concept that integrates with the built environment, while standing out adequately to catch the attention of users and to aid their navigation and orientation throughout the campus.



Sharjah Gateway to the Trucial States



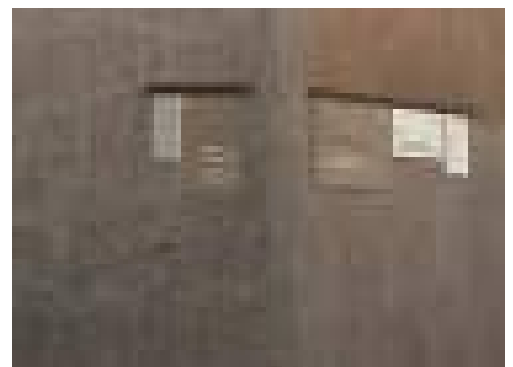
Eight heritage sites in Sharjah have applied for World Heritage nomination status, consisting of four urban and four rural locations spanning across the Emirate. They have all contributed to the development of Sharjah, yet differ in period, function and historical significance.

The World Heritage nomination aims to bring consistency and aesthetic appeal to the sites, capturing the attention of residents and visitors alike.

PenguinCube was approached to implement a wayfinding and signage programme to enhance and create a cohesive and impacting navigational experience for the sites. The aim was to immerse the user in each site, providing them with enough information to be enriched with their visit.



Shindagha Historical District



The true origin of Dubai, is undergoing a cultural makeover with the introduction of the Shindagha Museum. Our team developed the strategy and concept design of this complex Heritage District. Over 90 buildings in a 350,000 sqm site.



PenguinCube

Khorfakkan



Khorfakkan Beach is a 3-km stretch of beach that includes high-quality public amenities. With a range of activities and a variety of dining and hospitality options, the wayfinding and signage design developed by PenguinCube aids the visitor experience and flow across the beach.

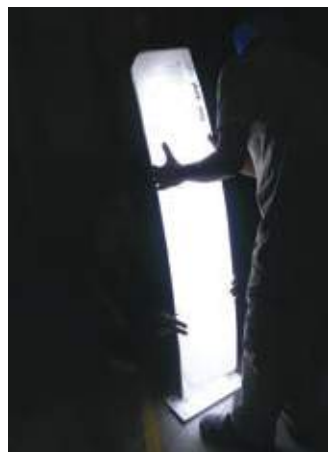
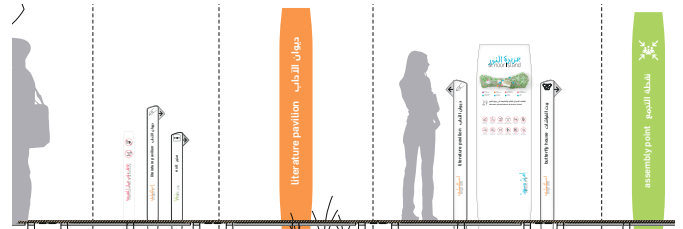


Al Noor Island

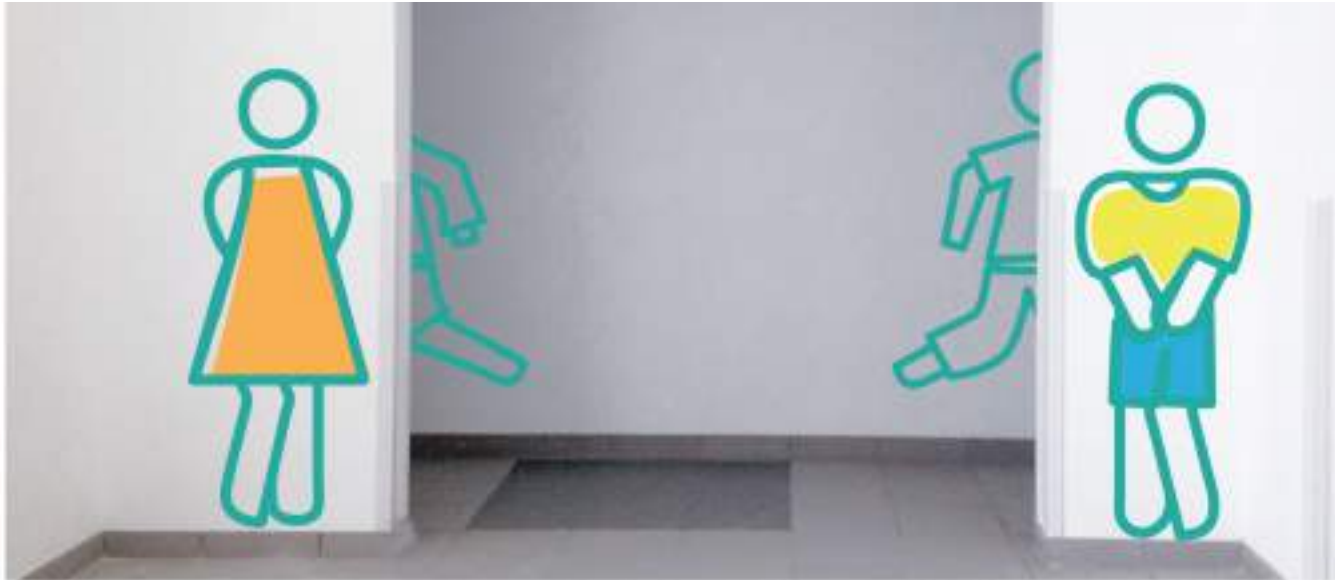


The Wayfinding and Signage for Al Noor Island is heavily inspired by its natural context. With an architectural intent to create all elements on the island seamless with nature. All signs are completely organic and curved thus creating a serious challenge for fabrication and construction.

At night, the signs “glow in the dark” adding to the mood of the overall island’s experience.



American International School-Riyadh



AIS-R, a new state-of-the-art campus, houses 1,650 students and is historically significant as AIS-R enters its next 50 years of excellence.

The objective of the project was to create a comprehensive signage system that goes with the school's spirit and brings life, colors and dynamism to the institution, while considering all the key destinations and how to navigate through them easily.

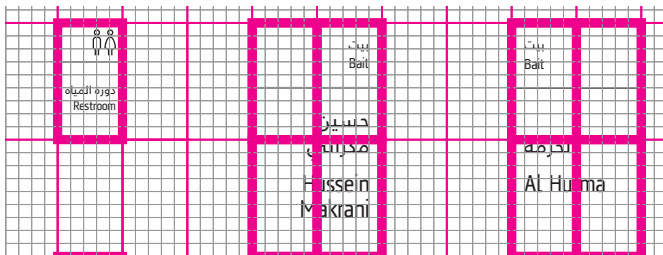


Sharjah Art Foundation



Sharjah Art Foundation brings a broad range of contemporary art and cultural programmes to the communities of Sharjah, the UAE and the region. PenguinCube was commissioned to develop a wayfinding and signage masterplan for its permanent buildings, temporary events, and future expansion.

The result is a minimal, raw, and refined modular concrete system that is integrated within the city's heritage and existing houses.

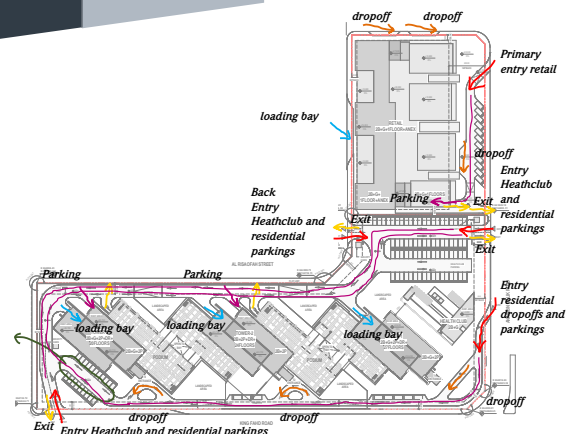
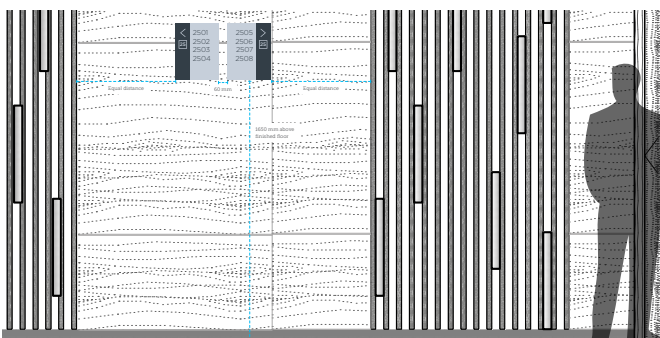


PenguinCube

Elite Towers



Elite Towers is a mixed-use developed in the heart of Riyadh. Our team developed the wayfinding and signage strategy and design across all components of the project, which include: Residential towers, parking, landscape, and retail.

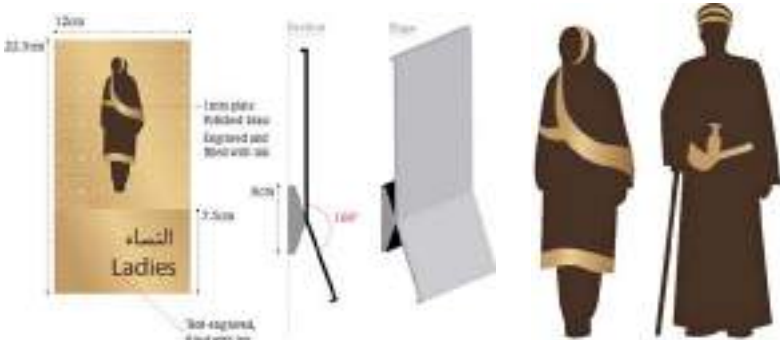


Royal Opera House Muscat



The Royal Opera House in Muscat is designed to be the leading arts and culture organization in the Sultanate of Oman. It has been designed to serve as a global centre for cultural engagement. Its design is a reflection of the fusion between traditional Oman and modern Oman.

The elaborate designs of the interior, which have been hand crafted to the smallest of details, provided the basis and one of the project's challenges, when it came to designing and planning a much needed wayfinding system. The patterns and motifs inspired the background of the signs and their materials, while at the same time posed challenges when it came to fixation and sign positions.



King Abdullah Financial District



The King Abdullah Financial District (KAFD; Plots 3.14/3.15) is an architectural complex being built in Riyadh. The project called for the design of a wayfinding system that echoes the triangulation pulsating through out the structure. It should also allow for clear navigation through its two main blocks.

The signs, made out of brushed aluminum plates, accommodate for both Arabic and English titles and differentiate between indoor and outdoor signs through the silver and bronze colored aluminum respectively. The forms of the signs are inspired by the architecture of the district itself.



Aisha Bint el-Sayyid Ibrahim Mosque



Aisha Bint el-Sayyid Ibrahim (also known as Al Warqa) mosque is a Friday prayer mosque located in Al Warqa 3 area in Dubai. This project has a distinctive architectural design language that has a fluid interplay between the building mass and the elements of nature; such as wind, sound, light, and landscape.

Our design team relied on the animation provided by natural light to define a certain perception of the different spaces of the mosque.

The key idea behind the concept we presented was to revisit traditional elements and religious notions in order to add a modern feel to the space. In collaboration with Ibda Design, we designed a pattern that has 3 levels and that would be an abstraction of the three basic stances of the praying ritual.

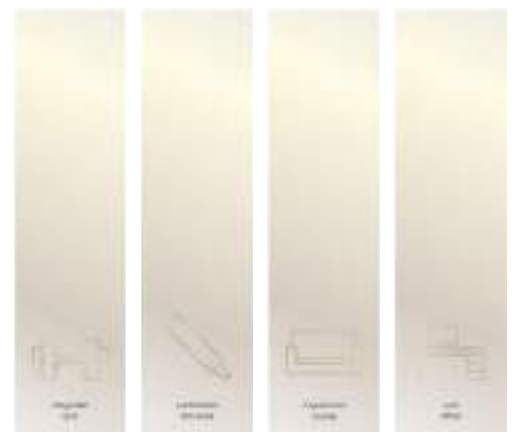
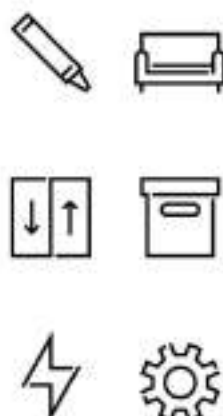


PenguinCube

Emaar Square Cairo



A high-end mixed-use development in Cairo. Our team developed the wayfinding and signage design for multiple residential buildings in this Emaar community.



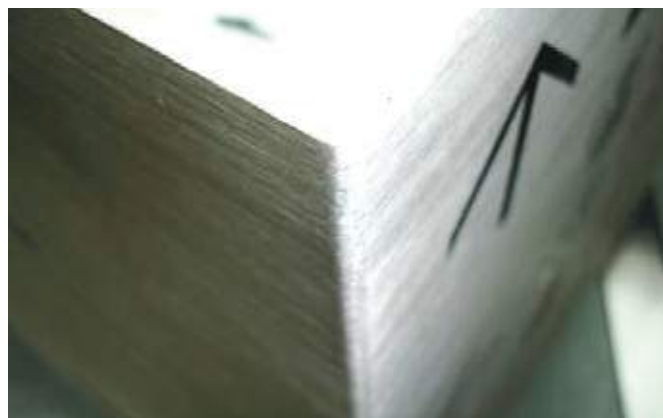
Wayfinding and signage. Commissioned by Perkins+Will. Executed in Cairo, Egypt. Completed in 2018.

Princess Nora University



PenguinCube was retained by Dar al Handasah (Shair and Partners) to supervise the fabrication and installation of the wayfinding and signage system for this massive academic campus.

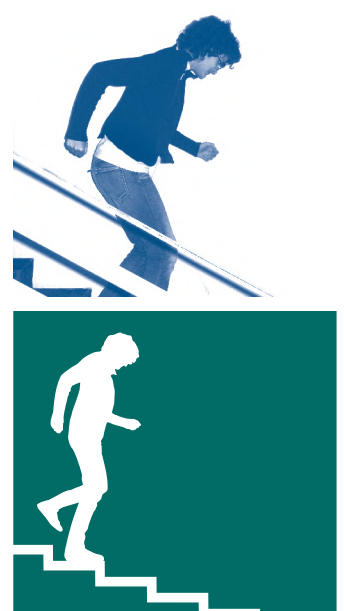
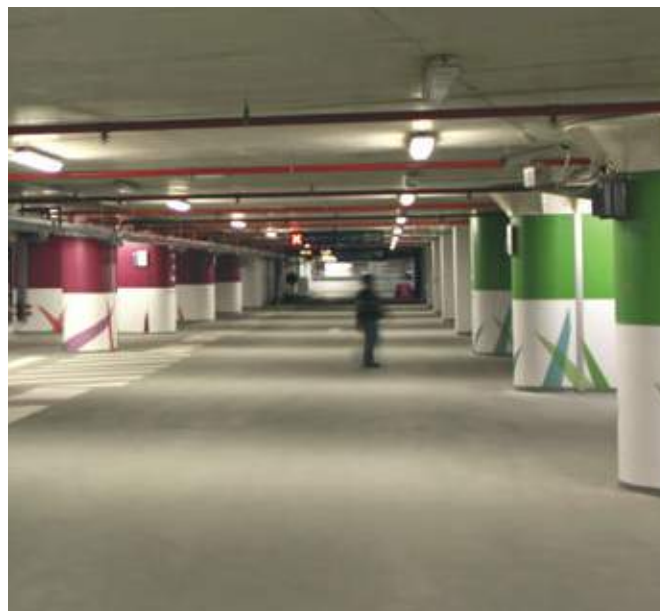
PenguinCube's roles included but were not limited to, value engineering, coordination between four manufacturers in three cities, supervise the execution of over 40,000 signs including inspection of the raw material as well as workshopping fabrication techniques and mechanisms with contracted fabricators.



Beirut Souks



Since the mid 90's, Solidere was commissioned to rebuild the central district of Beirut including the old souks while maintaining the same grid and historic feel, but with a contemporary edge. For the design and execution of the Southern part of the Souks, our team designed the wayfinding and signage design. The gentrification aim of this old commercial area was to rehabilitate it as an integral part of the capital's central district. Our concept aimed at creating a design that looked like institutional, municipal signage; while allowing for the definition of a distinct high-end shopping destination.



PenguinCube

Transmed



PenguinCube created a unique, cohesive, and modular wayfinding strategy and design for Transmed distribution warehouses, setting a benchmark in warehouse signage.

From dock numbering, floor markings, aisle sectioning, to regulatory signs and directional signs, the impactful and functional system creates a safe and pleasant work environment for everyone.



معايير النظافة الشخصية ونظافة المستودع Personal and Warehouse Cleanliness Standards				
غسل اليدين فوراً بعد استعمال الحمام	المحافظة على النظافة الشخصية	إبقاء الأبواب الخارجية مغلقة إلا في حال التفريغ والتحميل	التأكد من كل طبيلة قبل دخولها الى المستودع وترفض كل طبيلة لا تطابق الشروط المطلوبة	التأكد من نظافة ألبسة العاملين في المستودع ومركز العروضات

إرشادات في حال نشوب حريق Fire regulations in case of fire			معايير السلامة المثالية في المستودع Safety standards in the warehouse		
181 182 183	125	إطلاق صفارة إنذار الحريق	استعمال القفص الحديدي المخصص لرفع الأفراد الى الأماكن المرتفعة	ارتداء البزة الفوسفورية أثناء دوام العمل بشكل دائم	عدم الوقوف أو السير في الممرات المخصصة لعمل الآليات
التجمع في المكان المخصص في حال حدوث حريق	إخلاء المبنى من الموظفين والعمال وذلك باتباع إرشادات "مخرج الطوارئ"	قطع التيار الكهربائي	عدم تخزين البضاعة أمام مخارج الطوارئ ومطافئ الحريق	عدم تشغيل الآليات أو المرور على الأرض في حال وجود مياه	عدم الوقوف تحت الرافعات أثناء عملها

Mirfa Bay



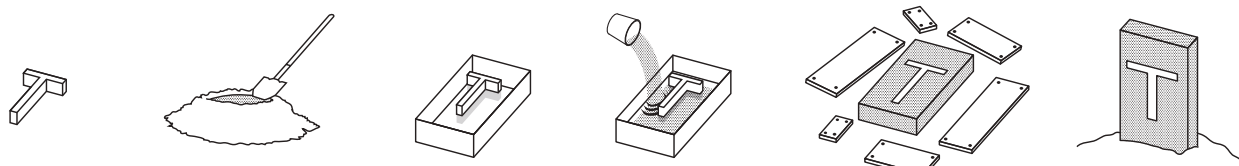
Mirfa Bay is MODON's latest waterfront development in Abu Dhabi. A mix of restaurants, boardwalks, and sports facilities, this is a must go-to-destination.

PenguinCube was tasked with developing the wayfinding and signage design strategy from concept through to detail design.

The design uses bright colours contrasted with black, the signs will certainly put you in a playful mood.

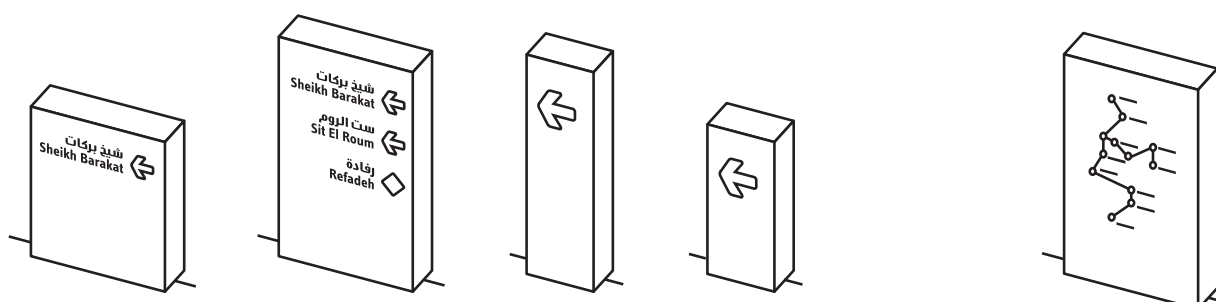


Forgotten Cities Hiking Trail



Forgotten Cities are 700 abandoned villages in northwest Syria between Aleppo and Idlib. Built during the 4th and 5th centuries, these communities are remarkable remnants of the Byzantine era and once formed a significant agricultural engine for the region. It was also a key pilgrimage site for Christians; the Church of Saint Simeon Stylites is one of the most famous buildings in the area.

Sadly, these villages slowly drifted into oblivion because of changes in climate and trade patterns as well as the advent of Islam. Seeking to raise awareness of this outstanding heritage, the Swiss Agency for Development and Cooperation in collaboration with the Syrian Directorate General of Antiquities and Museums (DGAM), initiated a project that would rehabilitate and preserve the sites in this area. PenguinCube was selected to create a wayfinding and signage design along three trails that would lead to 15 of the ancient towns. The path extends along a 140 km North-South axis and ranges in width from 20 to 30 km.



Ashkal Alwan Donor Wall

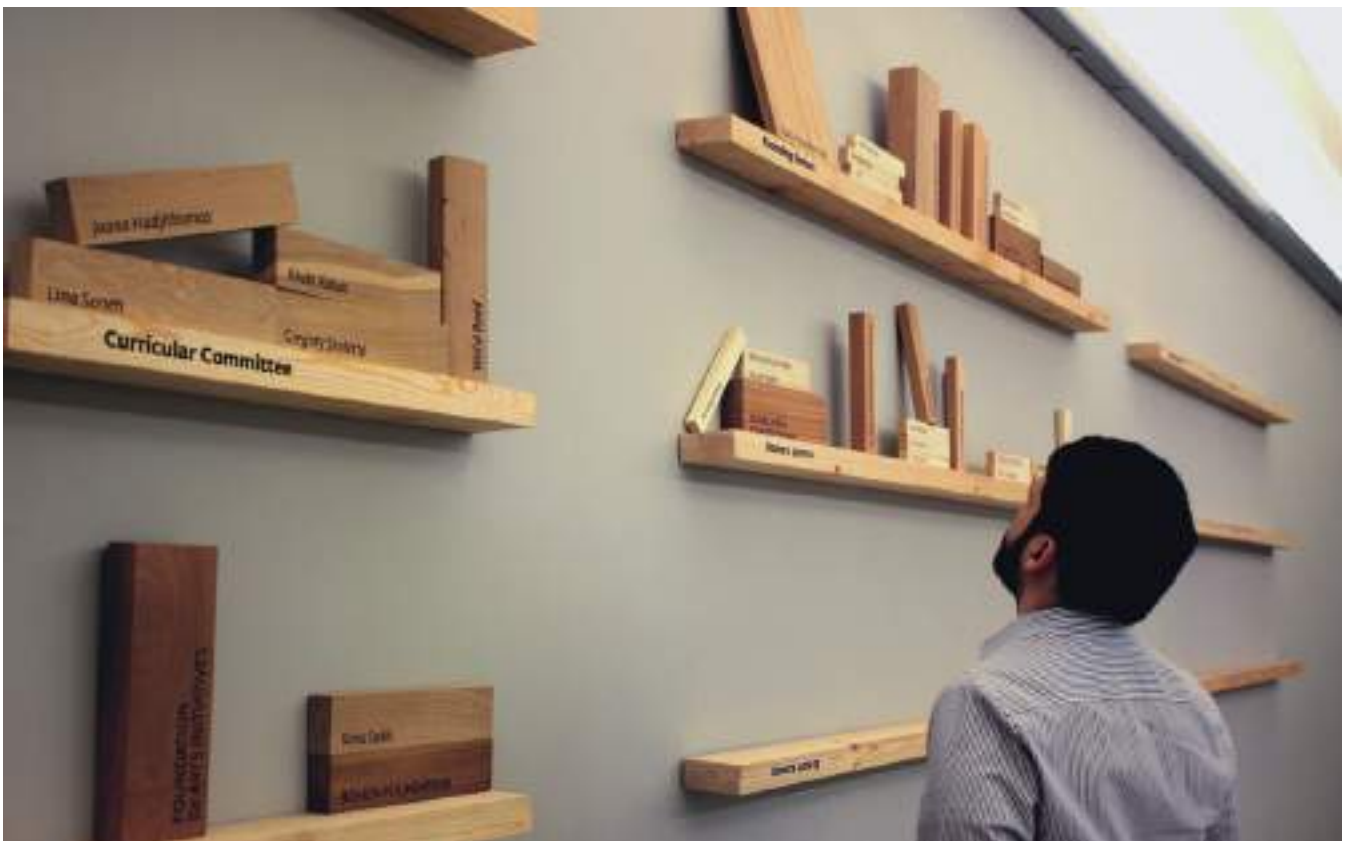


The Ashkal Alwan Home Workspace is a scholarship-driven contemporary arts school and artist residency space. It is entirely funded by donations from organizations and individuals. The school wished to recognize these donors, and invite others to participate in this type of philanthropic donation.

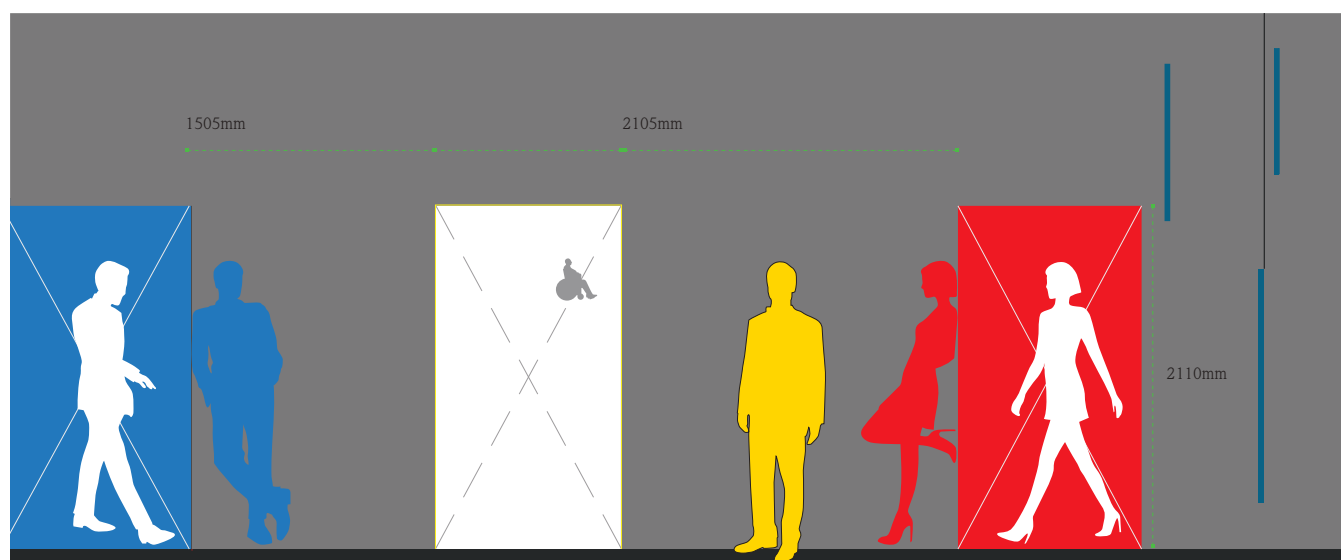
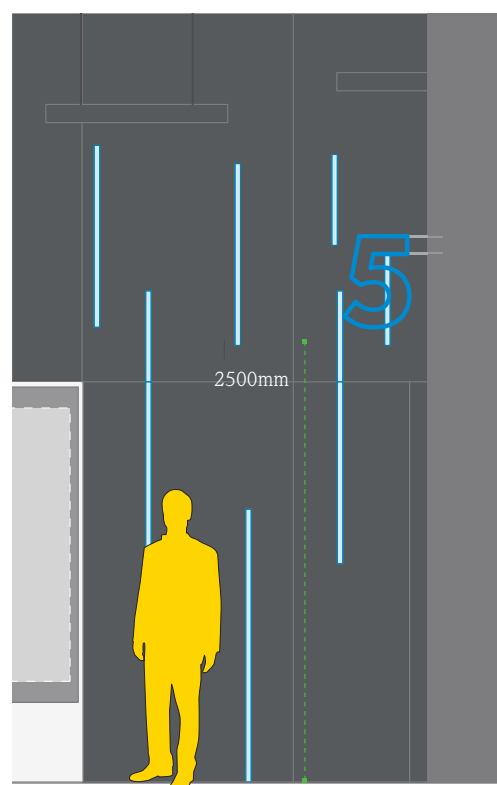
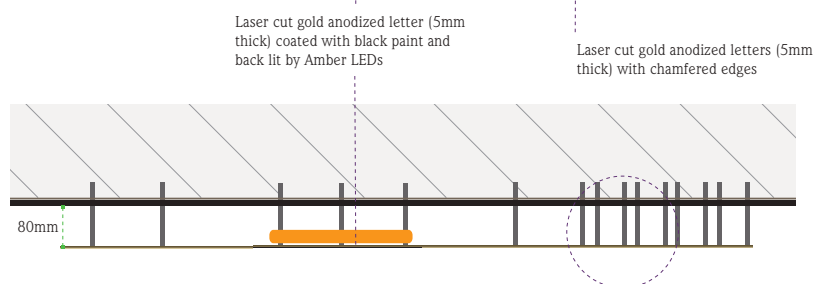
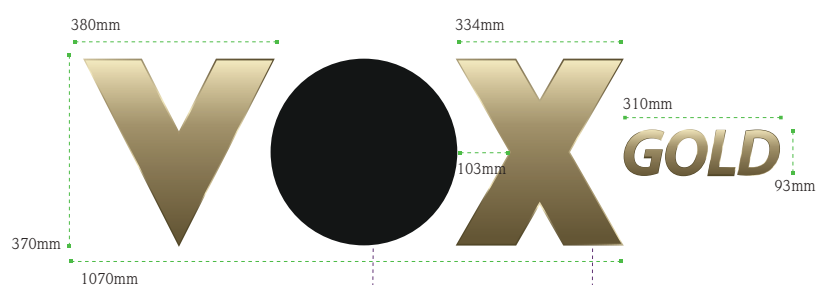
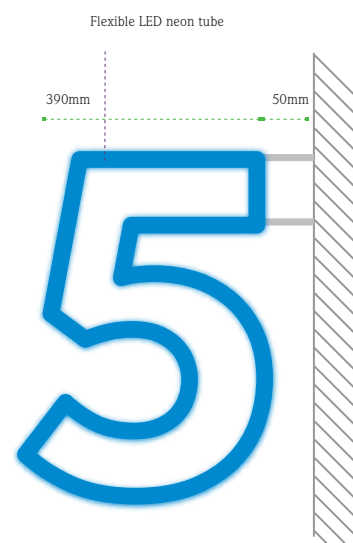
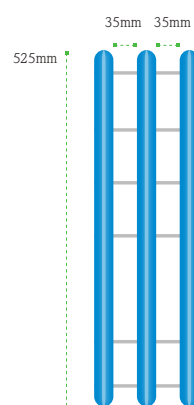
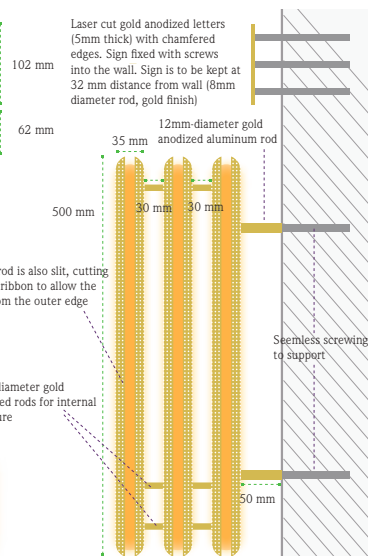
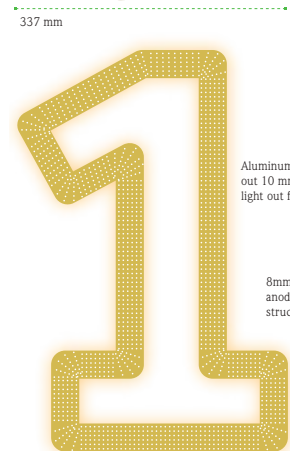
The brief required a “donor wall” to reflect the importance of ongoing donations, to represent the multi-layered complexity of the activity in the school, while taking into consideration the unassuming and raw character of the building.

The concept of the bookshelf emerged from the idea that each of the donations is an important contribution to education and research; and what better way to represent this than through one of the oldest and most grounded methods of providing education—the book?

In 2012, Bookshelf won an SEG Design Award and since it was installed, it contributed in increasing the amount of donations to the Ashkal Alwan Home Workspace.



GOLD

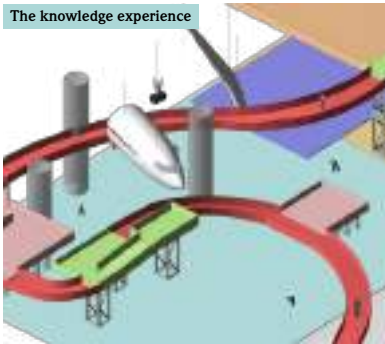


Wayfinding and signage. For **Beirut City Center Cinemas Majid Al Futtaim**. Executed in **Beirut**. Designed in **November 2011**.

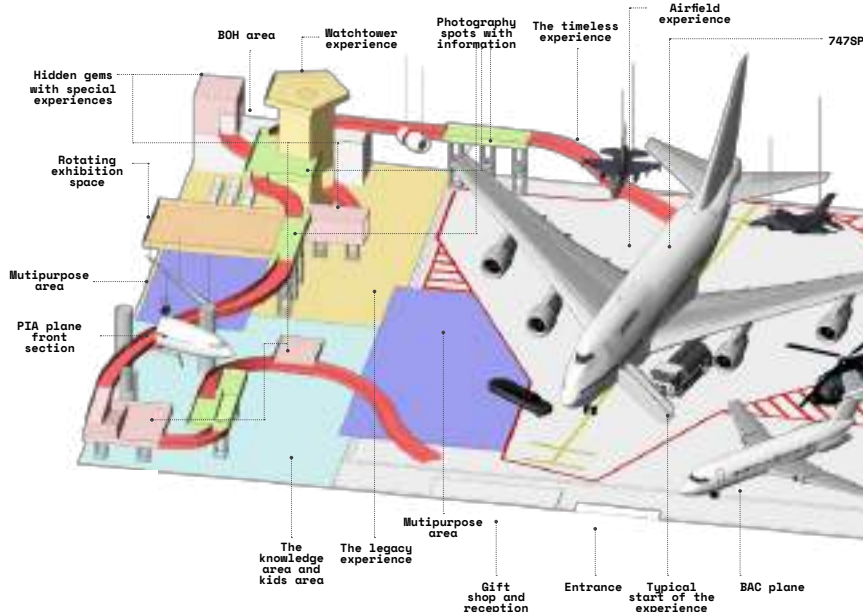
747 Hangar



The knowledge experience



The Legacy experience

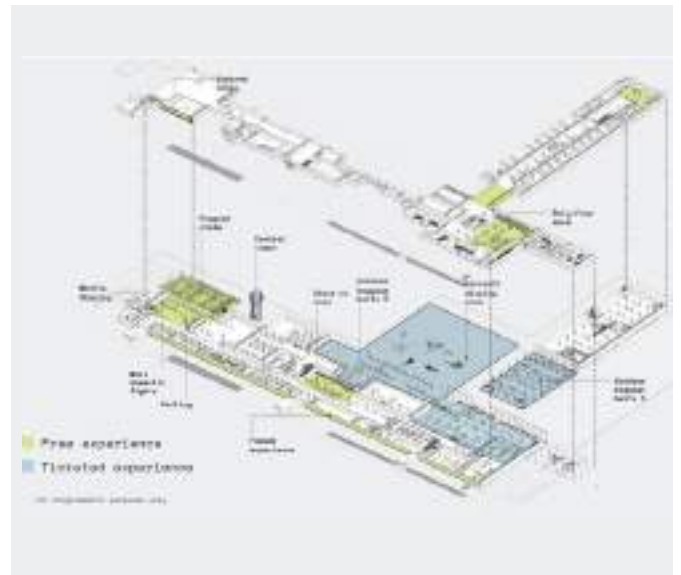


The project showcases the Sultan of Oman's former Royal Aircraft Boeing 747SP 'Sohar' in The Aviation Hangar. A comprehensive purpose-built experience that ties the culture and heritage of Omani aviation into one experience.

The Boeing 747SP is a rare plane that went out of production more than 30 years ago, with only 45 planes were ever produced. As a result, this aircraft exhibition will be the largest non-commercial plane on display in the world.

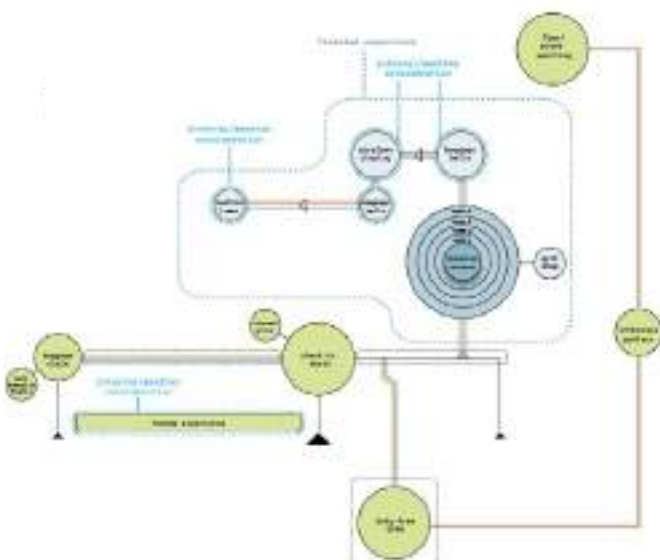
This mission is to design the experience brief, thematic requirements and user journey.

Oman Aviation Museum Strategy



The development of the Oman Aviation Museum strategy was a mandate awarded to PenguinCube to generate a vision, brief, scope of work, and pre-concept for a museum dedicated to exploring aviation history.

The project also consisted of developing an archive for objects of historical significance, outlines for potential themes, and the user flow design.



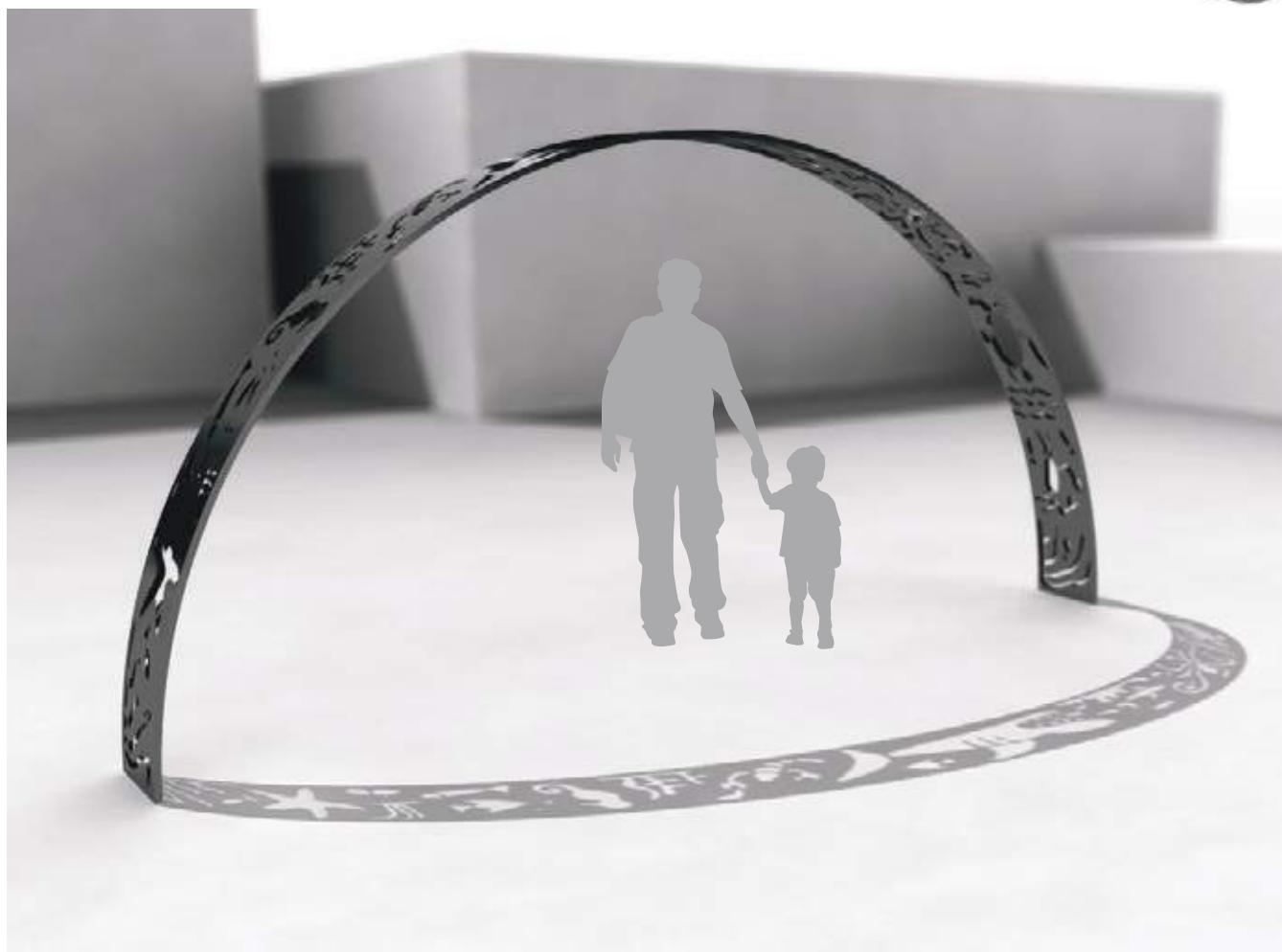
Sun Strokes



This was a competition entry for an initiative by King Abdallah University of Science and Technology (KAUST) to commission urban art for the university's public realm.

The initial idea was inspired by the sundial. The fact that Saudi Arabia is predominantly sunny made it interesting to exploit the sun in an interactive way with a structure that would play with its own shadow.

Sunstrokes is therefore an arc or passageway that can be situated in any open space, receiving sunlight all day. It is a structure that relies on and plays with the movement of the sun and the shadows it casts.



Client List

UAE

- > **Majid Al Futtaim**, Dubai, UAE
- > **Aldar**, Abu Dhabi, UAE
- > **Healthpoint Hospital**, Abu Dhabi, UAE
- > **Emaar**, Dubai, UAE
- > **Dubai Municipality**, Dubai, UAE
- > **DLR Group**, Dubai, UAE
- > **Leaders Sports**, Dubai, UAE
- > **noon.com**, Dubai, UAE
- > **FGB - First Gulf Bank**, Abu Dhabi, UAE
- > **Shurooq**, Sharjah, UAE
- > **Laing O'Rourke**, Dubai, UAE
- > **Sharjah Art Foundation**, Sharjah, UAE
- > **TECOM Dubai Design District**, Dubai, UAE
- > **Al Ghurair Investment**, Dubai, UAE
- > **Al Garhoud Private Hospital**, Dubai, UAE
- > **Cinema Akil**, Dubai, UAE
- > **Alserkal Avenue**, Dubai, UAE
- > **Dubai Design Days**, Dubai, UAE
- > **Dubai Design Week**, Dubai, UAE
- > **Art Dubai**, Dubai, UAE
- > **Pitfire Pizza**, Dubai, UAE

Saudi Arabia

- > **King Faisal Foundation**, Riyadh, Saudi Arabia
- > **Princess Noura University**, Riyadh, Saudi Arabia
- > **Al Dawaa Medical Services**, Dammam, Saudi Arabia
- > **King Abdallah Financial District**, Riyadh, Saudi Arabia
- > **King Abdallah University of Science and Technology**, Tuwel, Saudi Arabia
- > **Dar Al Handasah**, Riyadh, Saudi Arabia
- > **King Abdallah Waqif Hotels**, Medina, Saudi Arabia

Sultanate of Oman

- > **The Royal Court of Oman**, Muscat, Oman
- > **Universal Travel and Tourism**, Muscat, Oman

Qatar

- > **Qatar Foundation**, Doha, Qatar
- > **The Pearl Qatar**, Doha, Qatar
- > **Stars of Science TV Show**, Doha, Qatar
- > **Qatar National Food Security Program**, Doha, Qatar
- > **Silatech**, Doha, Qatar
- > **Qatalum**, Doha, Qatar
- > **Shumoukh Towers**, Doha, Qatar
- > **Hamad Medical Centre**, Doha Qatar

Malaysia

- > **IKEA/IKANO**, Kuala Lumpur, Malaysia

Kuwait

- > **Trafalgar - Kuwait Luxury Company**, Kuwait

Bahrain

- > **Elaf Bank**, Bahrain

Italy

- > **Systematica**, Milano, Italy

India

- > **AERENR**, Delhi, India

Jordan

- > **Capital Bank of Jordan**, Amman, Jordan
- > **Consolidated Consultants Group**, Amman, Jordan

China

- > **Unigrand Management Limited**, Guangzhou, China

Mozambique

- > **Riao Paints Limited**, Beira, Mozambique

Gabon

- > **Azur Telecom**, Libreville, Gabon

Switzerland

- > **Ecole Polytechnique Fédérale de Lausanne**, Lausanne, Switzerland
- > **ILO**, Geneva, Switzerland
- > **Swiss Agency for Development and Cooperation**, Bern, Switzerland

Belgium

- > **Young Arab Theatre Fund**, Brussels, Belgium

Lebanon

- > **American University of Beirut**, Beirut, Lebanon
- > **Zaitounay Bay**, Beirut, Lebanon
- > **Khatib and Alami**, Beirut, Lebanon
- > **Solidere**, Beirut, Lebanon
- > **Four Seasons Hotel**, Beirut, Lebanon
- > **Phonecia Intercontinental Hotel**, Beirut, Lebanon
- > **Ashkal Alwan**, Beirut, Lebanon
- > **MARIAGROUP**, Beirut, Lebanon
- > **UNDP**, Beirut, Lebanon
- > **UNEP**, Beirut, Lebanon
- > **ILO**, Beirut, Lebanon

United States

- > **DLR Group**, Omaha, Nebraska; Los Angeles, California
- > **The Getty**, Los Angeles, California
- > **Temple University**, Philadelphia, Pennsylvania
- > **Institute of Palestine Studies** Washington, DC

Canada

- > **Reich+Petch**, Toronto, Canada

Egypt

- > **Emaar Square**, Cairo, Egypt

United Kingdom

- > **Chatham House**, London, UK
- > **PLP Architecture**, London, UK
- > **Arab British Centre**, London, UK

Japan

- > **Arata Isozaki & Associates**, Tokyo, Japan

PenguinCube

Get in Touch

Worldwide experiences

Our team is present in the Middle East + Europe + North America.
We've done work in over 47 cities.

Montreal

PenguinCube, Inc.

office & mail 410-245 Chemin Bates,
Town of Mount Royal, H3S 0A3, QC, Canada

telephone +1 514 575 8636

email montreal@penguincube.com

Dubai

PenguinCube FZ-LLC

office 3rd Floor, Building 3, Dubai Design District (d3)

mail PO Box 333222, Dubai, United Arab Emirates

telephone +971 55 908 9388

email dubai@penguincube.com

drop us a note hello@penguincube.com

view our work penguincube.com